



Cabot
Learning
Federation

Haywood
Village
Academy
Attendance
Policy and
Procedure

Cabot Learning Federation V4.0 June 2024

Date Approved: 20 June 2024

Review Frequency: Annually

Date of Next Review: June 2025

Academy Council Approved: 16.7.2024

History of most recent Policy changes

Date	Page	Change	Origin of Change e.g. TU request, Change in legislation
Date	E.g. Whole Document	Detail of change	Reason for change
9/12/2021	Whole document	Implementation	Implementation of Federation wide policy
6/03/23	Whole document	Updated terminology. Edits throughout.	CLF policy update
29/01/24	Section 23.5	Alternative Education Provision: Off-site educational activity (B Code) – section revised.	To provide greater clarity
29/01/24	Section 24	Updated with link to the revised DfE travel to school guidance.	Updated DfE guidance
29/01/24	Section 25	Children Missing Education (CME) and removing pupils from roll: added in GCC and SCC information.	GCC and SCC schools have joined the trust.
29/01/24	Sections 22.5, 27.1 & Appendix 2	Removed specific references to SIMS	Move to Bromcom
05/02/24	Appendix 2	Aligned policy to reflect attendance team	Some staffing changes unaccounted for
20 June 2024	Throughout document	Updated references to attendance legislation and DfE attendance guidance.	Updated legislation and DfE guidance
	Throughout document	Minor changes to wording due to regs and guidance changes	Updated legislation and DfE guidance
	Throughout document	Minor changes to wording for increased clarity	Increased clarity
	Section 10	Section added 'Using data to support improvements in attendance'	Expectation in updated DfE guidance
	Section 12	Maximum length of registration time in template policy changed from 60 mins to 30 mins for secondary, alternative provision and special schools (primary was already 30 mins).	Updated DfE attendance guidance (which is now statutory) states registers should be kept open for no longer than 30mins
	Section 19	Penalty notices, prosecutions and education supervision orders section updated.	Introduction of a national framework for penalty notices: A 'Notice to Improve', and a 3-year rolling period with a change in penalty notice charge, two PN limit, and escalation for repeat offences.
24 June 2024	Throughout document	Academy specific information added. With effect from September 2024.	Academy implementation of CLF template policy



Contents

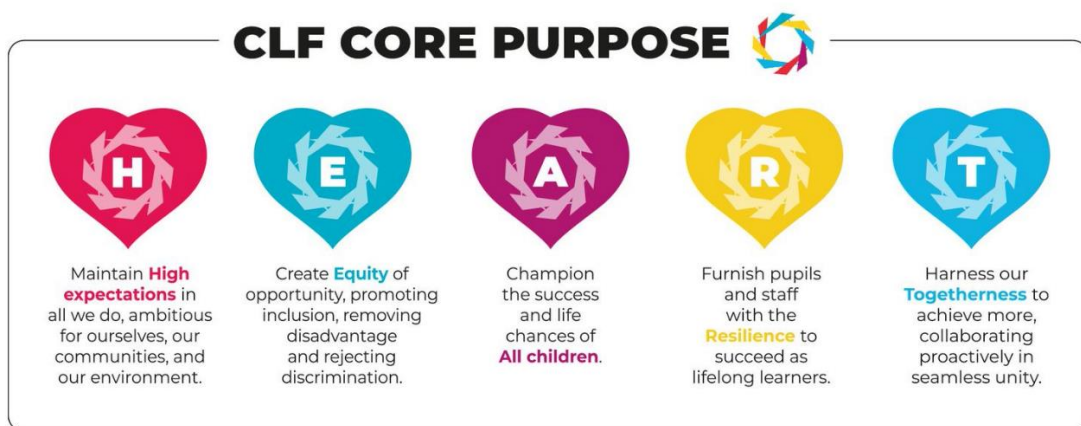
History of most recent Policy changes.....	2
Contents.....	3
1 Policy Statement.....	5
2 Reference to other relevant policies	5
3 Legislation or non-statutory guidance.....	5
4 Roles and Responsibilities	6
5 Equalities Impact Assessment	7
6 Data Protection Implications	7
7 Aims	7
8 Effects of non-attendance	8
9 Safeguarding and Attendance	9
10 Contents of Attendance Register.....	9
11 Present at School (and Lateness).....	20
12 Effects of Late Arrival.....	Error! Bookmark not defined.
13 Authorised Absence.....	Error! Bookmark not defined.
14 Phased Return to Full-Time Education	13
15 Following up Unexplained Absences.....	16
16 Support for School Attendance	17
17 Rewarding Good and Improved Attendance.....	20
18 Leave of Absence – leave requests and sanctions for unauthorised absence	20
19 Unauthorised Absence	21
20 Penalty Notices and Prosecutions	22
21 Mental Health, Wellbeing, Special Educational Needs and Disability.....	24



22	Approved Educational Activity (AEA).....	25
23	Unable to attend due to exceptional circumstances (as set out in DfE guidance).....	29
24	Children Missing Education (CME) and removing pupils from roll.....	30
25	Reporting to Parents/Carers.....	31
26	Recording Information on Attendance and Reasons for Absence	31
27	Policy Monitoring Arrangements.....	31
	Appendix 1 – Department for Education (DfE) Attendance Codes.....	32
	Appendix 2 – Roles and Responsibilities.....	36

1 Policy Statement

- 1.1 It is the aim of Haywood Village Academy that pupils should enjoy learning, experience success and realise their full potential. The Attendance Policy reflects this and recognises that regular attendance has a positive effect on the motivation and attainment of pupils.
- 1.2 As part of the Cabot Learning Federation (CLF), the academy is committed to the shared core purpose, which is at the HEART of all we do:



- 1.3 The academy strives to consistently deliver excellent educational experiences for pupils, improving their life chances and serving the communities of which we are a member.

2 Reference to other relevant policies

This policy should be read in conjunction with existing trust-wide and academy policies including (but not limited to) the following policies:

- Safeguarding and Child Protection Policy
- Special Educational Needs and Disability Policy
- Behaviour Policy
- Anti-Bullying Policy
- Exclusions and Suspensions Policy
- Supporting Pupils with Medical Conditions Policy

3 Legislation or non-statutory guidance

- 3.1 This policy meets the requirements of the following legislation which sets out the legal powers and duties that govern school attendance including:

- The Education Act 1996 (as amended)
- The Education (Pupil Registration) (England) Regulations 2006 (as amended in 2010, 2011, 2013 and 2016)



- The Education (Penalty Notices) (England) Regulations 2007 (as amended in 2012 and 2013)

3.2 DfE guidance:

- The Equality Act 2010 and schools (DfE May 2014)
https://assets.publishing.service.gov.uk/government/uploads/system/uploads/attachment_data/file/315587/Equality_Act_Advice_Final.pdf
- Supporting pupils at school with medical conditions (DfE December 2015)
<https://www.gov.uk/government/publications/supporting-pupils-at-school-with-medical-conditions--3>
- Education for children with health needs who cannot attend school (DfE January 2013)
<https://www.gov.uk/government/publications/education-for-children-with-health-needs-who-cannot-attend-school>
- Keeping children safe in education (DfE)
<https://www.gov.uk/government/publications/keeping-children-safe-in-education--2>
- Working together to improve School Attendance (DfE)
<https://www.gov.uk/government/publications/working-together-to-improve-school-attendance>
- School Attendance – Main Guidance (DfE)
<https://www.gov.uk/government/publications/school-attendance>
- School attendance parental responsibility measures (DfE January 2015)
<https://www.gov.uk/government/publications/parental-responsibility-measures-for-behaviour-and-attendance>
- School census guidance (DfE)
<https://www.gov.uk/guidance/complete-the-school-census>
- Suspension and permanent exclusion (DfE September 2022)
<https://www.gov.uk/government/publications/school-exclusion>
- School Exclusion (DfE September 2017)
<https://www.gov.uk/government/publications/school-exclusion>
- Home to school travel and transport guidance (DfE July 2014)
<https://www.gov.uk/government/publications/home-to-school-travel-and-transport-guidance>

4 Roles and Responsibilities

See Appendix 2.



5 Equalities Impact Assessment

An equality impact assessment has been undertaken for this policy in accordance with the Federation's equality, diversity and inclusion strategy and the Public Sector Equality Duty.

6 Data Protection Implications

6.1 The personal information the academy uses to help manage attendance and absence is governed by the UK GDPR and Data Protection Act 2018. Much of this information will be sensitive, to both pupils and their parents/carers, and staff must take care to apply appropriate safeguards to ensure personal information is processed fairly and lawfully, is the minimum amount necessary to achieve our aims, is accurate, and where necessary, kept up to date, is not held for longer than is necessary and remains safe and secure.

6.2 Staff must record personal information accurately, being clear whether something is an opinion, reported by someone else, or fact. It is also important to remember that pupils and parents/carers can ask to see copies of the personal information the academy holds about them.

7 Aims

7.1 The academy aims to meet its obligations with regard to school attendance by promoting good attendance; ensuring every pupil has access to the full-time education to which they are entitled; and acting early to address patterns of absence.

7.2 This policy sets out the academy's position on attendance and details the procedures that all parents¹/carers must follow to report their child absent from the academy.

7.3 It is vital that children develop regular attendance habits at an early age. Therefore, the academy will encourage parents/carers of Pre-school children, and Reception children who are not yet compulsory school age, to send their children to every session that is available to them.

7.4 The academy will also support parents/carers to perform their legal duty to ensure their children of compulsory² school age attend regularly, and will promote and support punctuality in attending lessons.

7.5 Pupils should attend the academy every day, unless they are really not well enough to. Children who attend regularly are more likely to feel settled in school, maintain friendships, keep up with their learning and gain the greatest benefit from their education. The academy wants all pupils to enjoy school, grow up to become emotionally resilient, confident and competent adults who are able to realise their full potential. Regular attendance and punctuality are essential in the workplace and children who are used to attending school on time, and on every occasion, unless they are too unwell to attend, will be better prepared for the attendance expectations in the workplace.

¹ Education law defines parents as: all natural parents, whether they are married or not; any person who has parental responsibility for a child or young person; and any person who has care of a child or young person i.e. lives with and looks after the child.

² A child becomes of 'compulsory school age' on the 1st January, 1st April or 1st September following their 5th birthday and ceases to be of compulsory school age on the last Friday in June of Year 11.



- 7.6 In April 2017 the Supreme Court clarified the definition of regular attendance to be attendance “in accordance with the rules prescribed by the school”, therefore if an absence is not authorised by the school, the pupil’s attendance is deemed to be irregular.
- 7.7 The academy will do all it can to encourage pupils to attend. The academy will make the best provision it can for any pupil who needs additional support in school or who is prevented from attending school, due to physical or mental health needs or disability. The academy recognises for disabled pupils, ‘reasonable adjustments’ may be needed to the school environment or to policies to support good attendance. Please see DfE guidance documents [‘Supporting pupils at school with medical conditions - December 2015’](#) and [‘Ensuring a good education for children who cannot attend school because of health needs- January 2013’](#) – or ask the academy for printed copies.
- 7.8 One of the most important factors in promoting good attendance is the development of positive attitudes towards school. To this end, the academy strives to provide a happy and rewarding experience for all children, and to foster positive and mutually respectful relationships with parents/carers.
- 7.9 By promoting good attendance and punctuality the academy aims to:
- Make good attendance and punctuality a priority for all those involved in the academy community
 - Raise pupils’ awareness of the importance of good attendance and punctuality
 - Provide support, advice and guidance to parents/carers, pupils and staff
 - Work in partnership with parents/carers and, where appropriate, the wider family

8 Effects of non-attendance

- 8.1 Any absence affects the pattern of a child’s schooling and regular absence may seriously affect their learning. The Department for Education (DfE) defines a pupil as a ‘persistent absentee’ when they miss 10% or more schooling across the school year, for whatever reason.
- 8.2 The table below indicates how what might seem like just a few days of absence can result in children missing a significant number of lessons.

Attendance during the school year	Days lost in a year	Which is approximately	Approximate number of lessons missed
95%	9.5 Days	2 Weeks	60 Lessons
90%	19 Days	4 Weeks	120 Lessons



9 Safeguarding and Attendance

- 9.1 The academy will monitor trends and patterns of absence for all pupils as a part of its standard procedures. However, it is recognised that sudden or gradual changes in a pupil's attendance may indicate additional or more extreme safeguarding issues. In line with government guidance [Keeping Children Safe in Education](#), Local Procedures and the Academy's Safeguarding Policy, staff will investigate and report any suspected safeguarding cases on to the relevant authorities. As part of the academy's safeguarding duty and standard procedures, staff will inform the Local Authority and/or the Police of the details of any pupil who is absent from school when they cannot establish their whereabouts and is concerned for the pupil's welfare.
- 9.2 If a pupil is not attending as required, where the academy deems it appropriate, staff may make home visits to see and speak to the pupil and parents/carers as part of the academy's safeguarding and attendance processes. If staff are unable to see and speak to the pupil and parents/carers, they may contact the pupil's emergency contacts and/or other professionals or contacts of the family, who they reasonably expect may be able to provide the academy with relevant information.

10 Using data to support improvements in attendance

- 10.1 The academy will ensure data is routinely used to identify emerging attendance issues and reduce absence. This will include using internal sources of information such as the CLF Black Box data and the school level attendance tracker, as well as other available sources.
- 10.2 The academy will regularly review attendance at individual pupil level, looking at a range of data including overall attendance, absence by code, broken weeks and punctuality.
- 10.3 The academy will regularly review and analyse attendance, persistent absence, and severe absence data, for the whole school and by groups. The academy will regularly compare this data with external data including other CLF academies, local, regional and national data. This will help to identify particular areas of success, and also areas for improvement.

11 Contents of Attendance Register

- 11.1 The law states that schools must take the attendance register at the start of each morning session of each school day and once during the afternoon session. The school must record whether each pupil is:
- Present at the school,
 - Attending a place other than the school, or
 - Absent from the school.
- 11.2 Appendix 1 provides a list of register codes.

12 Attending the school (and lateness)

- 12.1 Pupils are marked present if they are in the academy when the register is taken. (/ = morning session \ = afternoon session.) If a pupil leaves the academy premises after registration, they are still counted as present for statistical purposes.



- 12.2 Breakfast club is open from 7:45am. You can pre-book your child's slot through Scopay. Bookings can be made online up to 48 hours prior to the session. Booking can also be done through the school office. Children will be provided breakfast which is a choice of cereal and toast. Each session costs £2.50 unless they attend Pre-school where it will be £4.
- 12.3 Morning registration
- Pupils are expected to be in school at in good time for the start of the morning register, this means they should arrive at school at least **5 minutes** before the register is taken.
 - The morning register is taken at **9am** on each school day.
- 12.4 Afternoon registration
- The afternoon register is taken at **1pm (EYFS/KS1) and 1:15pm (KS2)** on each school day.
- 12.5 Late arrival
- If a pupil arrives at school after the morning or registration times above, they will be marked as late.
 - L code: A pupil arriving up to 30 minutes after the morning and/or afternoon registration times stated above will be marked as (**L**) – which, although late, still counts as present.
 - U code: A pupil arriving more than 30 minutes after the morning and/or afternoon registration times stated above will be marked with the unauthorised absence code 'Late after registers close' (**U**) for the afternoon session, unless there is a valid reason for their lateness. Section 18 of this policy provides more information on unauthorised absence.
 - Other absence codes: A pupil arriving more than 30 minutes after the registration time, due to a valid reason such as unavoidable medical appointment, will be marked with the appropriate authorised absence code.
 - It is the duty of parents/carers to ensure that children attend school on time. This encourages habits of good timekeeping and lessens any possible classroom disruption.
 - When a pupil arrives late to the academy, they miss important events like assembly, teacher instructions and introductions; this can seriously disadvantage pupils.
 - It is recognised that pupils are sometimes late due to reasons such as caring for parents/carers or siblings, or transport difficulties. Pupils and parents/carers are encouraged to contact the academy to ask for help if needed.
 - If a pupil starts arriving late to the academy on a regular basis, the academy will work with the pupil and family to find out more about the reasons for lateness and whether any support is needed for the pupil or family, to enable the pupil to arrive on time.



- The table below indicates how frequent lateness can add up to a considerable amount of learning being lost.

Minutes late per day	Equates to days of learning lost in one year	Which means this number of lessons missed
5 mins	3 Days	15 Lessons
10 mins	6 Days	30 Lessons
15 mins	9 Days	45 Lessons

13 Authorised absence

- 13.1 'Authorised absence' means that the academy has either given approval in advance for a pupil of compulsory school age to be away from the school or has accepted an explanation offered afterwards as justification for absence. Please see codes below and the DfE's [Working together to improve school attendance](#) guidance for more information.)

Authorised absence		
C1	Absent to participate in a regulated performance or undertaking regulated employment abroad.	Authorised absence
C2	Pupil of compulsory school age is absent due to a part-time timetable agreed by the parent and the school	Authorised absence
C	Absence agreed by the school due to an exceptional circumstance	Authorised absence
E	Suspended or permanently excluded and no alternative provision made	Authorised absence
I	Illness (physical and/or mental health related)	Authorised absence
J1	Absence agreed by the school to attend an interview for employment or for admission to another educational institution	Authorised absence
M	Absence agreed by the school for medical/dental appointment	Authorised absence
R	Day set aside for religious observance	Authorised absence
S	Study leave for a public examination	Authorised absence



T	A mobile child (child of no fixed abode) who is travelling with their parent for their trade or business	Authorised absence
X	Non-compulsory school age pupil not timetabled to attend	Not counted in possible attendances

The following information provides more detail about the main circumstances where absence may be authorised by the academy:

13.2 Illness

- Parents and carers are expected to notify the academy on the first day their child is unable to attend due to illness (both physical and mental health related) – see absence reporting and response section, below.
- If the child is ill for more than one day, the parent/carer should contact the school each day to provide an update, unless otherwise agreed by the academy.
- In most cases, absences for illness which are reported by following the academy's absence reporting procedures will be authorised and coded **I** (Illness).
- If the academy has genuine and reasonable doubt about the authenticity of the illness, the academy will request medical evidence to support the absence.
- Where medical evidence is considered necessary, the academy will not be rigid about the type of evidence requested and will speak to the family about what evidence is available. Where a parent cannot provide evidence in the form requested but can provide other evidence, the academy will take this into account. Where a parent cannot provide any written evidence, the academy will speak to the parent and pupil, if appropriate, which may, in itself, serve as the necessary evidence to record the absence appropriately.
- If the academy is not satisfied about the authenticity of the illness, the absence will be recorded as unauthorised.
- Where a pupil's health need means they need reasonable adjustments or support because it is complex or long term, the academy will seek medical evidence to better understand the needs of the pupil and identify the most suitable provision in line with the statutory guidance in [supporting pupils at school with medical conditions](#) or [arranging education for children who cannot attend school because of health needs](#).
- The reporting of absence due to illness remains the responsibility of the parent/carer. Absences due to illness which have **not** been reported to the academy by the parent/carer on the first and any subsequent days of absence may not be authorised.

13.3 Pupils taken ill during the academy day



If a pupil needs to be sent home due to illness, this should be by agreement with an appropriately authorised member of academy staff. In such circumstances, the pupil must be collected from the academy office by a parent/carer or another authorised adult (unless otherwise agreed between the school and the parent/carer) and signed out in the 'signing out' book. No pupil will be allowed to leave the academy site without parent/carer confirmation.

13.4 Medical and dental appointments

- Parents/carers should try to make appointments outside of academy hours wherever possible. Where appointments during the academy day are unavoidable, the pupil should only be absent for the minimum amount of time necessary for the appointment. It is not acceptable for a pupil to miss a whole day for an appointment, unless absolutely necessary, in which case the academy will need an explanation as to why this is.
- If a pupil must attend a medical appointment during the academy day, they must be collected from the academy office by the parent/carer or another authorised adult and signed out in the 'signing out' system. No pupil will be allowed to leave the academy site without parent/carer confirmation.
- Advance notice is required for medical or dental appointments, unless it is an emergency appointment. Parents/carers should also provide the academy with sight of, or a copy of, the appointment card or letter.

13.5 Phased return to full-time education

- In line with the expectations of the Department for Education, all pupils of compulsory school age are entitled to a full-time education, suitable to their age, ability and aptitude, and any special educational needs or disabilities that they may have.
- In very exceptional circumstances there may be a need for a temporary part-time timetable to meet a pupil's individual needs. For example, where a medical condition prevents a pupil from attending full-time education and a part-time timetable is considered as part of a re-integration package.
- If, for any reason, the academy is unable to provide a pupil with a full-time education due to the pupil's needs, staff will work with the pupil, parents/carers and other agencies where appropriate, to come to an arrangement that is deemed to be in the best interests of the child wherever possible.
- Any part-time timetable should be in place for the shortest amount of time possible, it must not be treated as a long-term solution. It should be reviewed at least every two weeks unless agreed by the Principal, whilst arrangements are made to support the pupil's return to full-time education at the academy or, where appropriate, at alternative provision.



- A decision to place a pupil on a part-time timetable should be approved by the Principal and must be agreed by the parents/carers. The SENCO and DSL, as well as any other relevant members of staff, should also be aware of such arrangements and involved with decision making where appropriate. Discussions and agreements should be clearly documented in writing and relevant information should be recorded in the academy's management information system and CPOMS. The academy will be mindful of any additional safeguarding risks to the pupil when they are not timetabled to attend school and will therefore consider carefully whether a part-time timetable is an appropriate measure.
- If the pupil's part-time timetable means the pupil is expected to arrive at the academy after the register closes in the morning and/or be absent for the academy's afternoon registration period, any such am and/or pm registrations must be recorded with the **C2** code 'Pupil of compulsory school age is absent due to a part-time timetable agreed by the parent and the school.' If the child is not yet compulsory school age, Code **X** 'Non-compulsory school age pupil not timetabled to attend' would be used instead.

13.6 Religious observance

- The academy acknowledges the multi-faith nature of the academy community and recognises that religious festivals sometimes fall outside of academy holidays or weekends.
- In accordance with the law, the academy will authorise one day's absence for a day exclusively set apart for religious observance by the religious body to which the parent/carer belongs – this will be marked with the **R** code. In line with the DfE's [Working together to improve school attendance](#) guidance, if necessary, the academy will seek advice from the parent/carer's religious body, about whether it has set the day apart for religious observance.
- Parents/carers should notify the academy in advance that their child will be absent for religious observance, so that the academy knows whether to expect the pupil into school or not.
- If a parent/carer would like their child to be absent for an additional day, around a religious observance, they should contact the academy. The academy will consider each application individually taking into account the specific facts and circumstances and relevant background context behind the request. If additional absence is authorised, this will be marked with the **C** code.
- The academy will ensure a pupil is not penalised for absence due to days of Religious Observance, for example if using attendance rewards.

13.7 Mobile pupil - parent travelling for occupational purposes

- A mobile child is a child of compulsory school age who has no fixed abode and whose parent(s) is engaged in a trade or business of such a nature as to require them to travel from place to place.



- The academy will authorise the absence of a mobile child who is unable to attend school because they are travelling with their parent in the course of their trade or business. This is subject to certain limits, depending on the child's age and number of sessions absent. The school will discuss cases individually with parents as necessary. Parents should let the school know of their plans as far in advance as possible.
- The academy will not unnecessarily ask for proof that a parent is travelling for occupational purposes, this will only happen when there are genuine and reasonable doubt about the authenticity of the reason for absence given. If there is doubt, the school may ask for proof that the family are required to travel for occupational purposes during the period of absence.
- To help ensure continuity of education for mobile children, when their parents are travelling for occupational purposes in England, wherever possible it is expected that children should attend a school where their parents is travelling and be dual registered at that school and at this academy, which is their 'main school'.
- The **T** code, which is an authorised absence, will be used when mobile children are known to be travelling for occupational purposes, but it is not known whether the child is attending another educational provision.
- When their parents are not travelling occupational purposes, mobile children are subject to the same rules as other children in terms of the requirement to attend school regularly.

13.8 Suspensions (previously called fixed-term exclusions)

- If the academy decides to send a pupil home for a fixed period due to their behaviour, this will be recorded as a suspension. The academy will follow the DfE's current [statutory guidance on suspensions and permanent exclusions](#).
- Any suspension must be agreed by the Principal.
- The academy will notify the parents/carers of the suspension. If the pupil is a child in care, the academy will notify the pupil's carer, social worker and the local authority's virtual school. In other instances, where a pupil is open to children's social care for any reason, the academy will also inform the pupil's allocated social worker.
- The pupil must be collected from the academy office by the parent/carer or another authorised adult and signed out in the 'signing out' system. No pupil will be allowed to leave the academy site without parent/carer confirmation.

14 Absence reporting and response

14.1 Absence reporting

- Parents/carers are expected to notify the academy of the reason for their child's absence on each day of absence.



- If a pupil is absent due to illness which lasts more than one day, the parent/carer should contact the school each day to provide an update, unless otherwise agreed by the academy.
- If a pupil is absent due to illness or any other reason, parents/carers should notify the academy of the absence as early as possible. This should be before **[8.30 am]** on the day of absence and include the specific reason ('unwell' is not sufficient).
- Parents/carers can notify the academy by phone, using the academy telephone number of 01934 312720.
- The academy may contact parents/carers to check how the pupil is and discuss a pupil's absence in more detail.
- In some cases, the academy may require parents/carers to report absence in a different way – if this is the case, the academy will contact parents/carers to explain this requirement.

14.2 Response to unexplained absence

- The academy will follow up any absences where the parent/carer has not made contact to explain the reason. Following up on unexplained absences can take up a considerable amount of academy resources, therefore, the academy expects parents/carers to report all absences. If a parent/carer does not contact the academy on the morning of each absence, the absence may not be authorised, unless the academy is satisfied there is a good reason why the pupil is unable to attend and why the parent/carer was not able to contact the academy by the required time on the day of absence.
 - When the academy establishes the reason for the absence, it will be marked as authorised or unauthorised depending on the reason. If the academy is unable to establish the reason for absence, having followed the academy's attendance procedures, the absence will be marked as unauthorised, using the **O** code.
 - If a pupil is not attending and the academy is unable to establish the reason why and/or confirm the pupil's whereabouts, the academy will take appropriate action which will depend on the circumstances of each case. This could include, but is not limited to: contacting the pupil's emergency contacts, or other contacts of the family who the academy reasonably expect may be able to advise of the pupil's whereabouts; contacting other professionals; contacting siblings' schools; home visits to the family address; making enquiries with neighbours; requesting a Welfare Check from the police; and making referrals to Children's Social Care.
 - If the academy is unable to find out the reason for absence through the process outlined above, the academy will follow its Response to Unexplained Absence Process.
 - If a pupil has a social worker and/or youth offending team worker the academy will inform the relevant worker/s if a pupil has unexplained absences from school.
- Further enquiries to support absent pupils



- If a pupil is not attending and the academy is unable to establish the reason for absence, or confirm the pupil's whereabouts, or is concerned for the welfare of the pupil, the academy will take appropriate action which will depend on the circumstances of each case. This could include, but is not limited to:
 - contacting the pupil's emergency contacts, or other contacts of the family who the academy reasonably expect may be able to provide information,
 - contacting siblings' schools,
 - contacting other professionals,
 - home visits to the family address,
 - making enquiries with neighbours,
 - requesting welfare checks from the police,
 - making referrals to children's social care.
- Pre-agreed absence
 - Parents/carers are not required to contact the academy on the day of an absence if the parent/carer has already formally notified the academy prior to the day of absence and the absence has been agreed in advance. For example, a planned hospital appointment or an exceptional term time leave of absence which has already been agreed by the Principal in writing.
 - Parents must contact the academy if plans change and their child is no longer expected to be absent, so the academy is aware the pupil is to be expected after all and will follow first day absence procedures in the usual way if the pupil doesn't attend.
- Emergency contacts

Parents/carers will be asked to supply details of at least two other responsible adults who can be contacted in an emergency. It is the responsibility of parents/carers to keep these contact details up to date by informing the school office. The academy will also remind parents/carers about this via newsletters and during parents evening.
- Coding unexplained absences
 - Following up on unexplained absences can take up a lot of time, therefore, the academy expects parents/carers to report all absences directly to us. If a parent/carer does not contact the academy on the morning of each absence, the absence may not be authorised, unless the academy is satisfied there is a good reason why the pupil was unable to attend and why the parent/carer was not able to contact the academy by the required time on the day of absence.
 - If the academy is unable to establish the reason for absence, having followed the academy's attendance procedures, the absence will be marked as unauthorised, using the **O** code.

15 Support for school attendance

15.1 Communicating with parents/carers where attendance is a concern



When the academy has concerns about the attendance of a pupil, staff will do their best to make the parents/carers aware of the concerns about their child's attendance in the most accessible way possible, communications will be provided in accessible formats and can be offered in different languages if requested.

15.2 Pupils who are reluctant to attend

- Sometimes pupils can be reluctant to attend. The academy encourages parents/carers and pupils to be open and honest with us about the reason for their child's absence. If a child is reluctant to attend, it is never better to cover up the reason for their absence. As a school, we need to understand the reasons why a pupil is reluctant to attend, to be able to support pupils and parents/carers in the best way.
- The academy's aim is to work in partnership with parents and carers to remove barriers to good attendance. Staff strive to establish good working relationships with the families of our pupils through good communication and regular meetings to address on-going attendance concerns. If necessary, staff signpost our families to specialist support services who can work with the family and academy in a multi-agency way.

15.3 Child-on-child abuse

- All pupils have an absolute right to be educated in a safe and secure environment and to be protected from others who may wish to harm, degrade or abuse them physically, verbally, and emotionally, both in person and online. There is no justification whatsoever for bullying behaviour and it should not be tolerated in any form. Differences including race, religion, gender, sexual orientation, and ability, are absolutely repudiated as reasons for bullying.
- The academy recognises that a pupil may be reluctant to attend if they are experiencing any kind of child-on-child abuse. We constantly strive to promote a positive and inclusive culture where all pupils feel valued, have a strong sense of 'belonging' and are fully supported if things go wrong.
- The academy takes all reports of child-on-child abuse extremely seriously. All incidents will be investigated, appropriate measures will be taken for all pupils involved, including working with and making referrals to external agencies where appropriate.
- The academy recognises that child-on-child abuse is a rarely witnessed event, and that the most likely source of information will be through hearsay (either direct from the victim, or indirectly through witnesses or parents).
- If a parent/carer thinks their child is experiencing child-on-child abuse or is concerned their child may be involved in child-on-child abuse in any way, they are encouraged to report this to us as quickly as possible, so that appropriate measures can be taken.
- Please see our Anti-Bullying policy Safeguarding and Child Protection Policy for more information on how child-on-child abuse is addressed.

15.4 Children in care



- Foster carers do not have parental responsibility for the children in their care, although they are responsible for ensuring their regular school attendance.
- If a child in care is not attending the academy, or there are concerns about their attendance, the academy will seek advice from the local authority's virtual school and the child's social worker, as well as communicating with the pupil and foster carer.

15.5 Disability related absence

- The academy will ensure reasonable adjustments are made for disabled pupils (defined as those with a 'physical or mental impairment which has a substantial and long-term adverse effect on that person's ability to carry out normal day to day activities'). This may include changes to the physical environment, curriculum or the way information is provided, as well as providing auxiliary aids

15.6 Young carers

The academy recognises that pupils who are Young Carers may have caring responsibilities that impact on their punctuality and/or attendance. Where this is the case, the academy will work with the pupil and family to encourage them to access appropriate support, including direct support from the Young Carers service and any other support the pupil and family may need; the academy will also provide support in school where appropriate.

15.7 Parents who live separately

Where appropriate, the academy will involve all parents/carers to ensure each is aware of their child's attendance pattern and is able to support the child's attendance to improve. Where a child lives with different parents/carers on different days, we will take this into consideration when working with the parents/carers.

15.8 Complex family circumstances

- The academy will not usually request legal intervention from the local authority in cases where poor attendance is symptomatic of complex family circumstances. In such circumstances the academy will take a holistic approach to the issue and involve other agencies as necessary.
- Where voluntary support is not working or not being engaged with, the academy will make the continued concerns clear to the parents/carers and where appropriate may take a more formal approach.

15.9 Formal non-attendance process

- Where there are continued concerns about a pupil's attendance which are not resolved informally, parents/carers may be asked to meet with the academy to discuss the matter more formally. In some cases, this may result in a formal action plan and/or attendance contract being produced. The academy may also invite other involved professionals, where relevant.

- To protect the child's right to an education, when considered appropriate and necessary, the academy will make referrals to the local authority for legal intervention.
- When referring for legal intervention, the academy will show that the parent/carer has been warned they are at risk of legal action.

16 Rewarding good and improved attendance

- 16.1 The academy recognises that rewarding good and improved attendance should be carefully considered, to ensure it does not make pupils who have poor attendance, feel marginalised, worried or guilty about their low attendance rate, its impact on the pupil's own learning or the learning or rewards for the class as a whole.
- 16.2 The academy will regularly review any reward systems to ensure they are not negatively impacting on individual pupils or groups of pupils.

17 Leave of absence – leave requests and legal intervention for unauthorised absence

- 17.1 The law does not grant parents/carers the automatic right to take their child out of school during term time for holidays or other absence such as trips and visits.
- 17.2 The academy will not authorise any leave of absence in term-time unless satisfied the reason for absence is exceptional. The academy will consider each application individually. A leave of absence is granted entirely at the academy's discretion.
- 17.3 Parents/carers are asked not to make plans to take their child out of school without making a request to the school first and the school gives permission for the absence. The request should be made by the parent/carer with whom the child normally lives.
- 17.4 Parents/carers wishing to request leave for their child should complete a Leave of Absence Request form which is available from the academy. The request should be submitted as soon as it is anticipated; and, wherever possible, at least four school weeks before the absence.
- 17.5 The academy will respond to term time leave requests within **7** school days of receipt, by contacting the parent/carer who made the request, by telephone or in writing. Any telephone agreement or refusal will also be confirmed in writing (usually by email).
- 17.6 If a parent/carer needs to make an urgent request for leave, they should contact the academy by telephone and speak to the office team in the first instance. The academy will aim to give a verbal response as soon as possible, and this will be followed up in writing.
- 17.7 Parents may be required to provide the academy with additional evidence to support a leave of absence request.
- 17.8 The academy will consider the individual facts and circumstances of the case; following consultation with other staff as required, including the Designated Safeguarding Lead (DSL).

17.9 The absence should be for the shortest time possible – if an absence is agreed, the Principal will decide how many days of absence will be authorised. Agreed leave will be marked with the C code ‘Absence agreed by the school due to an exceptional circumstance’. If the pupil is absent for more days than were authorised by the academy, the remaining days absent will be recorded as unauthorised absence, unless there is an exceptional reason for the additional absence.

17.10 Any holidays and other absence such as trips and visits which have not been agreed by the academy will be recorded as unauthorised.

17.11 If the academy has been notified a pupil’s absence is/was due to illness or other reason, but the academy has genuine and reasonable doubt about the authenticity of the reason for absence given and has reason to believe the pupil may have been absent due to a holiday, or other trip/visit, the school may ask for additional information or evidence from parents/carers to support the reason given. If the academy is not satisfied with the evidence provided, the absence may be recorded as unauthorised.

17.12 Parents/carers should be aware unauthorised absence may result in a penalty notice or prosecution. See ‘Unauthorised absence’ section for more information.

17.13 If the academy has any concerns about possible safeguarding risks, staff will follow the necessary protocols. (See the academy’s Safeguarding Policy for more information.)

18 Unauthorised absence

18.1 Unauthorised absence is where the academy is not satisfied with the reason given for the absence, or where no reason has been provided. Please see codes below and the DfE’s [Working together to improve school attendance](#) guidance for more information.)

Unauthorised absence		
G	Holiday not granted by the school.	Unauthorised absence
N	Reason for absence not yet established.	Unauthorised absence
O	Absent in other or unknown circumstances.	Unauthorised absence
U	Arrived in school after registration closed (where an authorised absence code does not apply).	Unauthorised absence

18.2 Unauthorised absence includes (but is not limited to) absences due to:

- Reasons which have never been properly explained to the academy
- Arriving at the academy after the register has closed. (Although late arrival for a reason such as a medical appointment will usually be an authorised absence – see ‘Medical / Dental Appointments’ section for more information.)
- Shopping
- Having a haircut



- Birthdays
- Waiting at home for something to be fixed, or a parcel to be delivered
- Parent/carer's or sibling's illness (unless very exceptional circumstances apply and have been agreed in writing by the academy)
- Day trips
- Holidays in term time (unless exceptional circumstances are agreed in writing, in advance, by the academy – see 'Leave of Absence' section).

18.3 Where the academy has genuine and reasonable doubt about the actual reason for a pupil's absence, staff may seek additional information or evidence from parents/carers regarding the absence, and/or make a home visit in to verify the reason. If the reason cannot be verified and the academy has cause to believe the reason given for absence may not be genuine, parents/carers may be asked to provide satisfactory evidence of the reason. If satisfactory evidence is not provided, the school may record the absence as unauthorised.

18.4 Unauthorised absences may result in legal intervention, usually penalty notices or prosecutions. See 'Penalty notices, prosecutions and education supervision orders' section for more information.

19 Penalty notices, prosecutions and education supervision orders

19.1 Under section 444 of the Education Act 1996, if a child of compulsory school age, who is a registered pupil at a school, fails to attend regularly at the school their parent(s) are guilty of an offence. This applies to both resident and non-resident parents who may both be subject to legal action if their child fails to attend school regularly. It also applies to others who may not be the parent but may have day to day care of the child. If an absence is not authorised by the school, the pupil's attendance is deemed to be irregular.

19.2 A pupil's unauthorised absence from school could result in one of the following:

- (a) A penalty notice. The penalty is £80 per parent, per child, payable within 21 days, rising to £160 per parent, per child if paid between 22 and 28 days. If a second penalty notice is issued within a rolling 3-year period the penalty is £160 per parent, per child if paid within 28 days; there will be no option to pay a lower amount. (Failure to pay a penalty notice will usually result in prosecution.)
- (b) Prosecution.

19.3 Penalty notices can be issued if a child has at least 10 sessions of unauthorised absence in a period of 10 school weeks. (A morning or afternoon is one session; a whole school day is two sessions.) However, the DfE's national framework for penalty notices allows penalty notices to be issued sooner than this, in some circumstances.

19.4 Before a penalty notice is issued, where considered appropriate, a Notice to Improve will be sent to parents/carers to give them a final chance to improve attendance before a penalty notice is issued. A Notice to Improve will not be issued where a warning is not considered appropriate, for example in the case of unauthorised term time holiday absence.



- 19.5 Penalty notices are issued to each parent/carer with responsibility for the child and are issued for each child with unauthorised absence. For example, if two siblings have unauthorised absence, and there are two parents/carers with responsibility for the children, four penalty notices would be issued.
- 19.6 The academy will refer cases of unauthorised absence that meet the threshold for a penalty notice to the local authority unless there are reasonable grounds for not doing so.
- 19.7 Referrals for penalty notices will include unauthorised absence due to term time holiday or other trips/visits, and other types of unauthorised absence.
- 19.8 When referring to the local authority for legal intervention, the academy will show that the parent/carer has been warned they are at risk of a penalty notice or prosecution.
- 19.9 Penalty notices are issued to parents as an alternative to prosecution and are intended to prevent the need for court action.
- 19.10 A penalty notice may not be issued if prosecution is considered to be a more appropriate sanction for a pupil's unauthorised absence.
- 19.11 The local authority will consider the information provided by the academy and take action in line with their protocols and procedures, following the DfE's [Working together to improve school attendance](#) guidance. This will include considering whether an education supervision order should be applied for, as well as, or instead of a prosecution.
- 19.12 See table below and the DfE's [Working together to improve school attendance](#) guidance for more information about penalty notices, prosecutions and education supervision orders. The local authority's penalty notice code of conduct is available from North Somerset Council.
- 19.13 Legal Intervention for Unauthorised Absence

Penalty notices	
<p>Penalty notices are issued to parents as an alternative to prosecution and are intended to prevent the need for court action.</p> <p>If a pupil has frequent, and/or extended period of unauthorised absence, a prosecution may be considered, instead of a penalty notice.</p> <p>Penalty notices cannot be paid in instalments.</p>	
Sanction	Outcome
First penalty notice (in a 3-year rolling period)	The penalty is £80 (per parent/carer, per child) payable within 21 days, rising to £160 if paid between 22 and 28 days. (Failure to pay will usually result in prosecution.)
Second penalty notice (in a 3-year rolling period)	The second time a penalty notice is issued to the same parent for the same child the amount will be £160 per parent, per child (if paid within 28 days). There is no reduction in the amount if the penalty is paid early. (Failure to pay will usually result in prosecution.)
Prosecutions for unauthorised absence	

Local authorities (LAs) are unable to issue more than two penalty notices to the **same parent** for the **same child, in a rolling 3-year period**. Should a third offence of unauthorised absence for the same child be committed during the 3 years (including where a child has moved school and fines have been issued by other LAs), the LA may prosecute the parent/carer(s).

As penalty notices are an alternative to prosecution, the LA may decide to proceed straight to prosecution instead of issuing any penalty notice.

If prosecuting, it is for the LA to decide whether a section 444(1) or section 444(1A) prosecution is most appropriate.

Sanction	Outcome
Prosecution under section 444(1) of the Education Act 1996	If found guilty, parents/carers may be fined up to £1000 and ordered to pay court costs. The court may also impose a Parenting Order.
Prosecution under section 444(1A) of the Education Act 1996	If found guilty, parents/carers may be fined up to £2500 and ordered to pay court costs. Other court outcomes include community sentences, such as Curfew Orders, Unpaid Work (Community Payback) or a prison sentence of up to three months. The court may also impose a Parenting Order.

Education Supervision Order (ESO)

The local authority must consider applying for an ESO (under section 36 of the Children Act 1989) before prosecuting under s444 Education Act 1996. An LA may apply for an ESO instead of, or as well as, proceeding with a prosecution. The order is placed on the child, and a supervisor from the LA is appointed by the court, to give directions to the child and their parents with a view to securing that the child is properly educated. Parents can be prosecuted if they persistently fail to comply with a direction; if found guilty they may be fined up to £1000.

20 Mental Health, Wellbeing, Special Educational Needs and Disability

Under the Equality Act 2010, schools are required to make reasonable adjustments for disabled pupils (defined as those with a 'physical or mental impairment which has a substantial and long-term adverse effect on that person's ability to carry out normal day to day activities.' Some specified medical conditions, HIV, multiple sclerosis and cancer are all considered as disabilities, regardless of their effect.) This may include changes to the physical environment, curriculum or the way information is provided, as well as providing auxiliary aids and equipment, or tailored services. Failure to make appropriate adjustments may impact on a pupil's attendance.

Need	Action	Contact Information
Mental health and wellbeing	Parents/carers who have concerns about their child's mental health and wellbeing can contact the academy's Designated Safeguarding Lead (DSL).	info@hva.clf.uk Request to speak to Sarah Saunter



Identified special educational needs or disability (SEND)	Parents/carers are encouraged to contact the academy's Special Educational Needs Co-ordinator (SENDCo) should they have any concerns about their child with identified SEND. Attendance issues should be considered as part of the pupil's individual support plan or Education Health and Care Plan, and part of any subsequent reviews.	info@hva.clf.uk Request to speak to Laura Lovely
Unidentified SEND	Parents/carers who think their child may have unidentified special educational needs are also encouraged to contact the academy's SENDCo.	info@hva.clf.uk Request to speak to Laura Lovely
Urgent health concerns	Parents/carers should contact their GP or the NHS Helpline by phoning telephone number 111 for advice if they are concerned about their child's mental or physical health and wellbeing. In case of emergency parents/carers should dial 999. After seeking emergency advice and support, parents should also let the academy know as soon as is practicable.	Phone GP/111/999 Contact: info@hva.clf.uk
Health needs impacting on attendance	If a pupil is frequently absent from the academy due to particular health need/s the academy may ask to meet with parents/carers (and other professionals where appropriate) to draw up an Individual Healthcare Plan to support the pupil's attendance. See the academy's Supporting Pupils with Medical Conditions Policy for more information. Also see DfE guidance Supporting pupils at school with medical conditions - December 2015 for more information.	info@hva.clf.uk Request to speak to Laura Lovely

21 Attending a place other than the school

- 21.1 When pupils are attending educational activities off the academy site, that have been arranged by the local authority or approved by the academy, the register will be marked to show this is the case. Please see information below and the DfE's [Working together to improve school attendance](#) guidance.

Attending a place other than the school		
B	Attending a place for an approved educational activity, arranged by the school, which is not a sporting activity or work experience. (Not dual registration.) (The school must also record the nature of the provision.)	Attending an approved educational activity



D	Not currently expected to attend, as dual registered at another school (i.e. pupil attending another school, PRU or alternative provision academy).	Not counted in possible attendances
K	Attending offsite educational provision arranged by the local authority. (The school must also record the nature of the provision.)	Attending an approved educational activity
P	Participating in an approved sporting activity.	Attending an approved educational activity
V	Attending an educational visit or trip arranged by on or behalf of the school.	Attending an approved educational activity
W	Attending approved work experience.	Attending an approved educational activity

- Academy attendance staff will be notified of all alternative education arrangements and updated about any changes, so they can ensure the academy’s registers are marked accordingly. Attendance staff and other relevant colleagues will communicate closely with the relevant alternative settings, as required.
- The academy will follow up attendance concerns, with pupils and parents/carers, in conjunction with the alternative education provider.
- If a pupil is only being offered part-time alternative provision (AP), the academy will ensure the pupil is offered additional educational provision, which together with the AP equates to a full timetable, unless there are exceptional reasons why not. Pupils will only be offered part-time educational provision for the shortest time possible, and this will be regularly reviewed with the pupil and parents/carers with the aim of the pupil accessing full-time education as quickly as possible.

21.2 Code K: Attending education provision arranged by the local authority

- If a pupil is attending offsite educational provision arranged by the local authority (which is not another state funded DfE registered school, Pupil Referral Unit or Alternative Provision Academy) such activity will be marked using the **K** code. (The academy will also record the nature of the provision.)
- The provider should provide attendance updates to the academy daily, unless otherwise agreed by the Principal or Vice Principal, so the academy can mark the register accordingly. They should notify the academy by 9:30am (or within 60 mins of the pupil’s expected arrival time, if this is later) as to whether the child is present or absent. This will ensure the academy is made aware of any attendance concerns as soon as possible and takes follow up action as necessary.
- The academy will mark any absences using the relevant absence code.



21.3 Code V: Attending an educational visit or trip

- If a pupil is participating in an educational visit or trip arranged by or on behalf of the school and supervised by a member of school staff, such activity will be marked using the **V** code.
- The academy will mark any absences using the relevant absence code.

21.4 Code P: Approved sporting activity

- If a pupil is participating in a supervised sporting activity off the academy site, such activity will be marked using the **P** code 'Approved Sporting Activity'. The sporting activity must be of an educational nature, approved by the academy and supervised by a person agreed suitable by the Principal. The academy must be satisfied that appropriate measures have been taken to safeguard the pupil.
- The provider should provide attendance updates to the academy daily, unless otherwise agreed by the Principal or Vice Principal, so the academy can mark the register accordingly. They should notify the academy by 9:30am (or within 60 mins of the pupil's expected arrival time, if this is later) as to whether the child is present or absent. This will ensure the academy is made aware of any attendance concerns as soon as possible and takes follow up action as necessary.
- The academy will mark any absences using the relevant absence code.
- The work experience provider should provide attendance updates to the academy daily, unless otherwise agreed by the Principal or Vice Principal, so the academy can mark the register accordingly. They should notify the academy by 9:30am (or within 60 mins of the pupil's expected arrival time, if this is later) as to whether the child is present or absent. This will ensure the academy is made aware of any attendance concerns as soon as possible and takes follow up action as necessary.
- The academy will mark any absences using the relevant absence code.

21.5 Code B: Attending any other approved educational activity (which is not a registered school³)

- If a pupil is attending an AP setting which is not a Pupil Referral Unit or Alternative Provision Academy, for part or all their education, the academy will mark the sessions which the pupil attends the alternative setting as code **B** (off-site educational activity). The academy must also record the nature of the provision.
- The academy will mark any sessions attended at the academy with the relevant present code, and any absences with the relevant absence code.

³ This includes provision such as Education First, Elmtree Learning Partnership and Impact Mentoring. It also includes any post-16 colleges which provide education for compulsory school aged children.



- APs which are not a Pupil Referral Unit or Alternative Provision Academy should provide attendance updates to the academy daily, unless otherwise agreed by the Principal or Vice Principal, so the academy can mark the register accordingly. They should notify the academy by **9:30am** (or within 60 mins of the pupil's expected arrival time, if this is later) as to whether the child is present or absent. This will ensure the academy is made aware of any attendance concerns as soon as possible and takes follow up action as necessary.
- AP settings which are not registered schools are only legally allowed to provide part-time education to pupils.
- There are some AP settings which are registered as Independent Schools⁴ and, as such, can offer full-time provision where required. However, pupils attending AP Independent Schools cannot be dual-registered – the B code must be used to reflect the pupil's attendance.
- If attendance and/or safeguarding concerns are identified at any point, the AP is expected to raise these with the academy immediately and a course of action will be agreed in writing between the academy and the AP.

21.6 Code D: Dual registered at another school

- If a pupil from the academy is attending another state-funded DfE registered school, Pupil Referral Unit⁵ or Alternative Provision Academy, for part or all their education, the pupil will be dual registered at this academy (Dual - Main) and the other setting (Dual - Subsidiary).

22 Off-site directions

- Any pupil on an off-site direction (OSD) must be dual registered at their main school (the 'sending school') and their subsidiary school (the 'receiving school').
- If a pupil from this academy is attending another school on an OSD, the pupil will be dual registered at the other school. This academy will mark the pupil with the registration code **D** during the time they are expected to attend the other school. The receiving school will mark the pupil present or absent, according to their attendance pattern. The receiving school will be expected to follow up any pupil absences in the same way they would for their other pupils, in conjunction with this academy where appropriate. They will also communicate the pupil's attendance with this academy on a regular basis, in line with the academy's OSD review process.

⁴ This includes Learning Partnership West.

⁵ This includes Lansdown Park Academy, Snowdon Village Academy, Bristol Hospital Education Service, Gloucestershire Hospital Education Service, Pathways Learning Centre (South Glos), Taunton Deane Partnership College (Somerset) and Voyage Learning Campus (North Somerset).



- If a pupil from another school is attending this academy on an OSD, the pupil will be dual registered at this academy. This academy will mark the pupil present or absent, according to their attendance pattern, whilst the sending school will mark them with the registration code **D**. This academy will follow up any absences in the same way as for all other academy pupils, in conjunction with the other school where appropriate. This academy will also communicate the pupil’s attendance to the sending school on a regular basis, in line with the academy’s OSD review process.
- At the end of the OSD period, the pupil will be expected to return to their main school’s roll and will come off roll at the ‘subsidiary’ school.
- A dual registered pupil must not be removed from either school’s roll without the agreement of the other school.

23 Unable to attend school because of unavoidable cause

23.1 In accordance with the DfE’s [Working together to improve school attendance](#) guidance, the academy will record pupils unable to attend school because of unavoidable cause in the circumstances listed below. Such absences are not counted in a pupil’s possible attendances, so do not negatively impact a pupil’s attendance data. Each school’s Y code data is however published alongside the school’s absence data in the DfE absence statistics three times a year.

Absent - unable to attend school because of unavoidable cause		
Q	Unable to attend as the local authority has a duty to make travel arrangements* and these are not yet in place.	Not counted in possible attendances
Y1	Unable to attend because the school is not within walking distance* and the transport normally provided for the pupil by the school or local authority is not available.	Not counted in possible attendances
Y2	Unable to attend due to widespread disruption to travel caused by a local, national or international emergency.	Not counted in possible attendances
Y3	Unable to attend due to part of the school premises being unavoidably closed.	Not counted in possible attendances
Y4	Unable to attend due to the whole school site being unexpectedly closed.	Not counted in possible attendances
Y5	Unable to attend as in criminal justice detention.	Not counted in possible attendances
Y6	Unable to attend due to public health guidance or law.	Not counted in possible attendances



Y7	Unable to attend because of any other unavoidable cause. (The academy must also record the nature of the unavoidable cause.)	Not counted in possible attendances
-----------	--	-------------------------------------

*See the DfE’s [Travel to school for children of compulsory school age](#) guidance, or ask the academy for a printed copy.

23.2 The academy will be extremely vigilant in the use of all Y codes. If in any doubt, the academy will seek the advice of the CLF Central Attendance Manager or CLF Central Attendance Officer.

As the definition of code Y7 could be open to interpretation, the academy will be particularly vigilant with this code. The use of this code should be agreed by either the Principal, Attendance Champion, CLF Central Attendance Manager or CLF Central Attendance Officer. When using Y7, the academy must also record the nature of the unavoidable cause as a red flag comment in the register, alongside the code

- If a pupil is attending an AP which is not a state-funded DfE registered school, Pupil Referral Unit, or Alternative Provision Academy, the pupil cannot be dual-registered. See the Code B section in this policy for more information.
- When a pupil from the academy is dual registered with another setting, the academy will ensure the pupil and parents/carers are clear about the pupil’s timetable, i.e. when the pupil is expected to attend the academy or the other setting, and what the arrangements are for register marking, including the use of the D code. The academy will also be clear which setting will be following up any absences.
- When a pupil is dual-registered, the AP should provide the academy with attendance updates weekly, unless otherwise agreed by the Principal or Vice Principal. However, if attendance and/or safeguarding concerns are identified at any point, the AP is expected to raise these with the academy immediately and a course of action will be agreed in writing between the academy and the AP.
- A dual registered pupil must not be removed from either setting’s roll without the agreement of the other setting.

24 Children missing education (CME) and removing pupils from roll

24.1 If the academy has reason to believe the pupil may no longer be living at the address held on record and staff are unable to confirm the whereabouts of the pupil through the academy’s usual processes, staff will follow the [CLF CME and Pupil Tracking guidance](#), along with [North Somerset Council's CME guidance](#) and make CME referrals as appropriate.

24.2 If a parent/carer notifies the academy in writing that the pupil and family are moving out of the area and the pupil no longer requires a place, the academy will remove the pupil from roll from the date of moving and will, at the same time, notify the local authority (LA) using the CME referral form.

24.3 The academy will add and delete pupils from roll in line with the law and statutory guidance, and make any additional CME referrals as appropriate, in accordance with North Somerset Council's guidance and the CLF CME and Pupil Tracking guidance.



- 24.4 The academy will seek advice from the LA if unsure about any individual cases: ewsreferrals@n-somerset.gov.uk
- 24.5 When removing a pupil from roll due to Elective Home Education (EHE) or Permanent Exclusion the academy will also follow the relevant LA EHE and Exclusion notification processes.
- 24.6 If a pupil on roll lives in a different LA area, the academy will follow the other LA's processes where appropriate.

25 Reporting to parents/carers

We will keep you informed on your child's attendance in the following ways:

- Attendance emails
- Telephone conversations
- Annual reports
- Parents evenings
- Face to face conversations

26 Recording information on attendance and reasons for absence

All absences are recorded in the attendance register in the academy's management information system, including information about the reason for the absence, how it was reported and by whom. Any additional information pertinent to the absence may also be recorded.

27 Policy monitoring arrangements

This policy will be reviewed annually by the attendance lead or more frequently if there are changes to legislation and guidance. At every review, the policy will be shared with the Academy Council.

Appendix 1 – Department for Education (DfE) Attendance Codes

Appendix 1 – Department for Education (DfE) register codes

Code	Description	Statistical Meaning
Attending the school		
/ \	Present at the school / = morning session \ = afternoon session	Attending
L	Late arrival before the register is closed (see code U for late arrival <i>after</i> the registers close)	Attending
Attending a place other than the school		
B	Attending a place for an approved educational activity, arranged by the school, which is not a sporting activity or work experience. (Not dual registration.)	Attending an approved educational activity
D	Not currently expected to attend, as dual registered at another school (i.e. pupil attending another school, PRU or alternative provision academy).	Not counted in possible attendances
K	Attending offsite educational provision arranged by the local authority. (The school must also record the nature of the provision.)	Attending an approved educational activity
P	Participating in an approved sporting activity.	Attending an approved educational activity
V	Attending an educational visit or trip arranged by on or behalf of the school.	Attending an approved educational activity
W	Attending approved work experience.	Attending an approved educational activity
Authorised absence		
C1	Absent to participate in a regulated performance or undertaking regulated employment abroad.	Authorised absence



Code	Description	Statistical Meaning
C2	Pupil of compulsory school age is absent due to a part-time timetable agreed by the parent and the school.	Authorised absence
C	Absence agreed by the school due to an exceptional circumstance.	Authorised absence
E	Suspended or permanently excluded and no alternative provision made.	Authorised absence
I	Illness (physical and/or mental health related).	Authorised absence
J1	Absence agreed by the school to attend an interview for employment or for admission to another educational institution.	Authorised absence
M	Absence agreed by the school for medical/dental appointment.	Authorised absence
R	Day set aside for religious observance.	Authorised absence
S	Study leave for a public examination.	Authorised absence
T	A mobile child (child of no fixed abode) who is travelling with their parent for their trade or business.	Authorised absence
X	Non-compulsory school age pupil not timetabled to attend.	Not counted in possible attendances
Absent - unable to attend school because of unavoidable cause		
Q	Unable to attend as the local authority has a duty to make travel arrangements and these are not yet in place.	Not counted in possible attendances
Y1	Unable to attend because the school is not within walking distance and the transport normally provided for the pupil by the school or local authority is not available.	Not counted in possible attendances



Code	Description	Statistical Meaning
Y2	Unable to attend due to widespread disruption to travel caused by a local, national or international emergency.	Not counted in possible attendances
Y3	Unable to attend due to part of the school premises being closed.	Not counted in possible attendances
Y4	Unable to attend due to the whole school site being unexpectedly closed.	Not counted in possible attendances
Y5	Unable to attend as in criminal justice detention.	Not counted in possible attendances
Y6	Unable to attend due to public health guidance or law.	Not counted in possible attendances
Y7	Unable to attend because of any other unavoidable cause. (The academy must also record the nature of the unavoidable cause.)	Not counted in possible attendances
Unauthorised absence		
G	Holiday not granted by the school.	Unauthorised absence
N	Reason for absence not yet established. (If the reason cannot be established within 5 school days, the N code should be changed to an O code.)	Unauthorised absence
O	Absent in other or unknown circumstances.	Unauthorised absence
U	Arrived in school after registration closed (where an authorised absence code does not apply).	Unauthorised absence
Administrative codes		
#	Planned whole school closure (such as weekends, bank holidays, school holidays, INSET days, and use of the whole school as a polling station).	Not counted in possible attendances



Code	Description	Statistical Meaning
Z	Prospective pupil not yet on admission register.	Not counted in possible attendances

Appendix 2 – Roles and Responsibilities

Key contacts

Please see the attendance section of our academy's website for information about:

- Our academy's senior leader responsible for the strategic approach to attendance (Attendance Champion).
- Who in the academy parents and pupils should contact on a day-to-day basis about attendance concerns.
- Who in the academy parents and pupils should contact for more detailed support on attendance.
- How parents/carers should report a child's absence.

The CLF Board

The Board is responsible for approving the CLF template policy.

The Academy Council

The Academy Council is responsible for approving local adaptations to the CLF template policy and monitoring its implementation and effectiveness.

The Academy Council is responsible for monitoring attendance figures for the whole academy at least 6 times a year. It also holds the Principal to account for the implementation of the Attendance Policy.

The link academy councillor for attendance will meet regularly with the staff at the academy to monitor pupil attendance and this meeting is reported back to the Academy Council.

The Principal

The Principal is responsible for ensuring this policy is implemented consistently across the academy, and for monitoring academy-level absence data and reporting it to academy council.

The Principal also supports other staff in monitoring the attendance of individual pupils and requests penalty notices, where necessary.

Any Senior Leaders (e.g. Vice Principal or Assistant Principal with Responsibility for Attendance)

Senior Leaders in the academy have a deep and clear understanding of attendance by group, such as gender, pupils entitled to Free School Meals, Pupil Premium pupils, pupils with SEND, Children in Care and attendance by Ethnicity and Language (English/EAL).

Senior Leaders recognise their responsibility to influence and improve the attendance of pupils that may fall into smaller groups, or the attendance of individual pupils with protected characteristics.

Senior Leaders ensure staff are clear about their roles and responsibilities in relation to attendance and have the required knowledge and skills to fulfil them.

Senior Leaders, within their operational role, regularly review the academy's attendance procedures – strengths and weaknesses, including seeking feedback from the attendance team; highlighting key issues with the Principal.

Attendance Team

The Attendance Team consists of the Assistant Principal, the Designated Safeguarding Lead/Family Support Worker and the Principal. A representative of the Attendance team and the Principal will meet regularly to monitor and review attendance across the academy – for individual pupils, vulnerable groups and the whole academy. During their meetings, the Attendance Team will identify pupils whose attendance is a cause for concern and put attendance interventions in place as necessary. Depending on the level of concern, the Attendance Team will involve class teachers and other relevant staff and co-ordinate meetings with parents/carers. Where considered necessary a formal action plan will be produced.

Attendance Team

The Attendance Team:

- Monitors attendance data at the academy and individual pupil level.
- Reports concerns about attendance to the Principal and Designated Safeguarding Lead (DSL) as appropriate.
- Arranges calls and meetings with parents/carers to discuss attendance issues.
- Co-ordinates requests for Term-time Leave of Absence, liaising with the Principal as necessary. (This also includes liaison with the DSL and Safeguarding Team.)
- Makes Children Missing Education referrals to the Local Authority where appropriate (this includes liaison with the DSL and Safeguarding Team).

The Senior Attendance Champion

In line with the DfE's [Working together to improve school attendance](#) guidance, our Senior Attendance Champion is expected to:

- Hold overall responsibility for championing and improving attendance in school and liaising with pupils, parents and external agencies where needed.
- Set a clear vision for improving and maintaining good attendance.
- Establish and maintain effective systems for tackling absence and make sure they are followed by all staff.
- Have a strong grasp of absence data to focus the collective efforts of the school.
- Regularly monitor and evaluate progress, including the efficacy of the school's strategies and processes.

They will:

- Ensure the academy has a robust attendance process, staff are clear about their roles and responsibilities in relation to attendance and have the required knowledge and skills to fulfil them.
- Regularly review the academy's attendance procedures – strengths and weaknesses, including seeking feedback from the attendance team, highlighting key issues with the Principal.
- Monitor and review attendance data at academy and individual pupil level, including through use of the CLF attendance tracker and Black Box.
- Have a deep and clear understanding of attendance by group, such as gender, pupils entitled to Free School Meals, Pupil Premium pupils, pupils with SEND, Children in Care and attendance by Ethnicity and Language (English/EAL).

- Privilege and act to improve the attendance of pupils that may fall into smaller groups, or the attendance of individual pupils with protected characteristics.
- Maintain an overview of pupils attending alternative provision and on off-site directions.

Attendance Administrators

The Attendance Administrators work in the school office and are responsible for ensuring that the daily registers are completed accurately and on time, recording the reasons for absences and reporting any concerns or patterns of absence to the Attendance Team.

Support the Attendance Officer and Family Support Worker to process Children Missing Education referrals.

Office Staff

Academy office staff are expected to take calls from parents/carers about absence and record the information on the academy (school) information management system (SIMS).

Removing pupils from roll in line with legislation and guidance. This must first be checked with the Principal.

Designated Safeguarding Lead (DSL)

Providing safeguarding support and advice to attendance colleagues as appropriate, including in response to term-time leave requests and CME cases; taking safeguarding action where necessary.

Meeting with the Academy Attendance Team to review the attendance of the pupils on the academy's Vulnerable List and agreeing any action needed.

Special Educational Needs Co-ordinator (SENCO)

Meeting with the Academy Attendance Team to review the attendance of the pupils on the academy's Vulnerable List/SEND Register and agreeing any action needed.

Family Support Worker

The Family Support Worker (FSW) will focus on safeguarding and how attendance links to wider safeguarding concerns. As DSL, the FSW will take any attendance concerns to the academy's weekly Safeguarding Team meetings.

The FSW will be the point of contact for parents/carer who have their own concerns about their child's attendance and will meet with parents/carers as and when necessary, share attendance concerns and draw up attendance plans or contracts as necessary. The FSW will also liaise with external agencies and make referrals as required.

Class Teachers

Class Teachers are responsible for recording their pupils' attendance on a daily basis, using the correct codes, and submitting this information to the academy office.



Where there are attendance concerns, either raised by the Class Teachers themselves or by the Attendance Team, they will 'check-in' with the pupil/parents to find out about any reasons for absence as part of their responsibilities under the academy's Safeguarding Policy.

Class Teachers may also be asked to meet with parents/carers whose child has a falling level of attendance and is flagged as a concern by the [Attendance Team].